

Public Lands

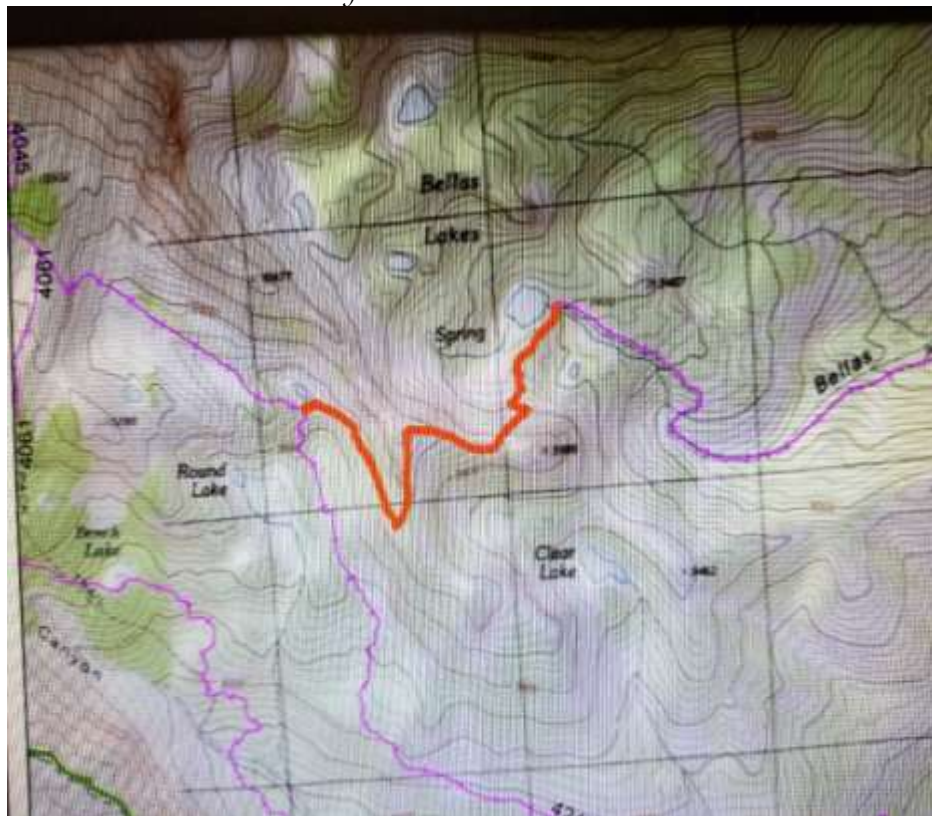


Public Lands Report East
2/21/2021
Tim Palmer

Salmon Challis National Forest

The Salmon Challis National Forest has listed 2 projects that may be of interest to BCHI members. The first is a connection trail in the pioneer Mountains. It is 1.3 miles and will connect Bellas Lake trail to Broad Canyon Trail. The second is to relocate a section of Trail Creek trail from private land to National Forest Land.

Bellas Creek to Broad Canyon Connector.





Caribou-Targhee National Forest

The Caribou-Targhee National Forest was open and allowed BCH projects in most of there Ranger Districts. The Portneuf back country has been working hard to get the Westside District moving forward in 2021.

The Dubois Ranger District is planning on improvements on the following trailheads, Bear Gulch, Coalmine, Pete Creek and Trail Creek.

Another development has been the Kilgore Gold Drilling Project. It is currently at the stage where all comments are being gone through. If approved, it will affect our experience as equestrians in the West Camas Creek area of the Centennial Mountains. I will report back on what transpires.



BLM

BLM continues to have an open to everyone approach to user groups. For the Wood River Valley, they have just released a decision and are going to add 81 miles of trails and, 7 new trailheads and 21 new dispersed campsites. They also changed some existing designations on some trails to allow e-bikes. The BLM will be constructing these trails, trailheads and campsites over the next few years. There are now maps to look at for those interested. The trails are close to Hailey Idaho. Looks like they are all open to hikers and horses and most are open to bikes and e-bikes. They handled this by changing the classification to motorized on the trails where e-bikes are allowed then putting restrictions on those trails for only certain user groups. This allowed them to keep ATVs and motorcycles

off those trails.

