



# BROOMTALES



Back Country Horsemen of Idaho, Inc. Newsletter  
Spring, 2024





**Aline Brinkmann—BCHI CHAIRMAN**  
208-521-3480  
chairman@bchi.org

**Dan Waugh—VICE CHAIRMAN**  
360-791-1591  
vice-chairman@bchi.org

**Robin Pilkington—SECRETARY**  
208-217-1901  
bchi.secretary@gmail.com

**Kay Ryan—TREASURER**  
208-398-8993  
treasurer@bchi.org

**Chris Reed—PAST CHAIRMAN**  
208-596-1222  
past-chairman@bchi.org

**Joe Brinkmann—NAT'L DIRECTOR**  
208-589-0014  
national-director-1@bchi.org

**Pat Bogar—NAT'L DIRECTOR**  
509-780-3545  
national-director-2@bchi.org

**Gary Kalmbach—ALT NAT'L DIR**  
208-507-1035  
alt-national-director@bchi.org

**Gary Kalmbach—PUBLIC LANDS-NO**  
208-507-1035  
public-lands-north@bchi.org

**Curtis Elton—PUBLIC LANDS-SO**  
208-484-8598  
public-lands-south@bchi.org

**Tim Palmer—PUBLIC LANDS-East**  
208-604-2736  
public-lands-east@bchi.org

**Todd Brown—SAWYER COORD Reg 1**  
208-451-3161  
sawyer-coordinator1@bchi.org

**Rod Adams—SAWYER COORD Reg 4**  
208-781-0548  
sawyer-coordinator4@bchi.org

**Dan Waugh—WAYS & MEANS**  
360-791-1591  
ways-means-chair@bchi.org

**Marjalisa Waugh—CALENDAR**  
208-477-4609  
calendar-coordinator@bchi.org

**Vacant—MAILING LIST**  
newsletter-mailing@bchi.org

**Steve Didier—EXPANSION**  
208-451-0146  
recruitment-coordinator@bchi.org

**Jill Nebeker—WEBSITE**  
208-922-4370  
website-coordinator@bchi.org

**Corey Dwinell—INSURANCE**  
208-661-4265  
insurance-coordinator@bchi.org

**Tim Palmer—FOUNDATION CHAIR**  
208-604-2736  
foundation-president@bchi.org

**Pat Bogar/Susan Johnson—BROOMTALES**  
509-780-3545/530-945-8606  
newsletter-editor@bchi.org

**[www.bchi.org](http://www.bchi.org)**

## View from the CHAIRMAN'S SADDLE



Hello fellow Back Country Horsemen of Idaho. I hope everyone is doing well. It looks like in some areas it has been spring-like weather and some have been able to go riding. Some of us have been teased with nice weather only to turn cold and windy and unable to ride. I'm sure there will be trails out there that will need clearing after the winter weather has gone for the year or maybe some projects unfinished last summer that can be finished this coming summer. Whatever the case may be, I'm

sure we are all anxious to get back in the saddle and hit the trails and plan our summer outings.

I'd like to give a special thanks to Deborah Samovar for the many years of hard work, hours and support she has given to BCHI as our state secretary and the calendar coordinator. Deborah has now retired and turned the duties over to a new secretary and calendar coordinator.

I'd like to welcome Robin Pilkington to her new position as our new state secretary and Karen Bailey as our backup secretary when needed. Another welcome to our new calendar coordinator Marjalisa Waugh. Thank you all for volunteering your time.

I hope to see you all at our state BOD meeting March 15th and the convention March 16th 2024. The Palouse Back Country Horsemen will be hosting the meeting and the convention in Moscow, Idaho.

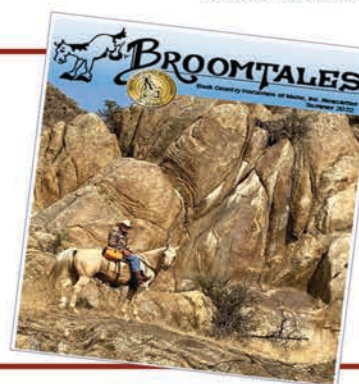
*Aline Brinkmann  
BCHI Chairman*

Thank you everyone for all you do!

### BCHI & BCHA Newsletters

If any member would prefer to receive the BCHI and/or BCHA newsletters via email, please let the person who manages your chapter's membership roster know so that they can pass this information on to BCHI Secretary Robin Pilkington at:

**[bchi.secretary@gmail.com](mailto:bchi.secretary@gmail.com)**



## BACK COUNTRY HORSEMEN OF IDAHO



### MISSION STATEMENT

To perpetuate the commonsense use and enjoyment of horses in America's back country & wilderness.  
To work to ensure that public land remains open to recreational stock-use.  
To assist the government and private agencies in their maintenance and management of said resources.  
To educate, encourage, and solicit active participation in the wise and sustaining use of these resources by horsemen and the general public.  
To foster and encourage the formation of new Back Country Horsemen state organizations.

**Back Country Horsemen of Idaho, Inc.**  
P.O. Box 513  
Salmon, Idaho 83467

For more information about Back Country Horsemen of Idaho state chapters, visit us on the web at:

**[www.bchi.org](http://www.bchi.org)**

Broomtales is the membership newsletter of the Back Country Horsemen of Idaho, Inc., a non-profit service organization, and is published three times a year.

**Front Cover: Squaw Butte BCHI Tin Cup near Stanley, Idaho**  
**Back Cover: Squaw Butte BCHI**

## Productive 2023 for Squaw Butte — by Heather Donesky, President Squaw Butte BCHI

The Squaw Butte Chapter of BCHI has events every month, but summertime is when we get into the glorious backcountry to do trail work and packing. Our leader for trailhead and trail projects is Lisa Baer and our packing leader is Dan Waugh.

During the summer of 2023, we put in new corrals at Tin Cup near Stanley working with the Forest Service and several other volunteer groups. Bart Baer and other volunteers did a lot of welding at home so that installation could go quicker on site.

We also cleared trail in several areas including Squaw Creek and Poison Creek, above Ola. Forest fires from a couple of summers ago had burned a small bridge, so among other things, we made a go-around through Poison Creek.

Dan led pack support for seven different projects serving ITA (Idaho Trails Association), PUG (Pulaski Users Group) SBFCF (Selway Bitterroot Frank Church Foundation) and other volunteer crews. Dan, Marjia and other helpers rode about 132 miles,

packed around 6000 pounds and got about 82 miles of trails cleared from Hells Canyon to the Frank Church Wilderness.

We also made a trip providing pack support into the Little Queens River area of the Sawtooths. The trail volunteers were from ITA and Dan and Marjia packed in supplies on five mules and ponies plus one donkey. That trip also included a guest from Australia and seven kids from ages 3 through 16. A great time was had by all.

We hold our monthly meeting in Emmett located in SW Idaho.



## Palouse BCHI hosting the 2024 BOD Meeting & Convention

**MARCH 15-16, 2024**

### **Location:**

**University Inn Best Western, 1516 Pullman Road, Moscow, ID 83843**

***Chapter Display Theme:***

***"Great Family, Good Friends, Better Trails"***

For more information, text or call Chris Reed 208.596.1222 or Carlee Reed 360.720.6493

Email: [gunslinger44@turbonet.com](mailto:gunslinger44@turbonet.com) or [carleereed2116@gmail.com](mailto:carleereed2116@gmail.com)



## FOUNDATION NEWS

As we begin the 2024 year, I would like to thank all of those who have served as Foundation Representatives and given of their time. We are looking forward to the state convention and will have lots to discuss.

**Chapters that wish to apply for grants,  
please submit them ahead of time so we  
have time to review them.**



*Tim Palmer  
Foundation President*



A \$100 donation by Bonnie J Williamson to honor dedicated horsemen Marcy and John Vranes of Lewiston, Idaho was made to the legal fund.



## Coming in Spring 2024

**Teton Valley BCH**

**Biannual**

**Pack Clinic & Tack Sale in Driggs, Idaho**

Date to be determined in May or June

One day event

### Searching for a BCHI Treasurer, by Kay Ryan — BCHI Treasurer

I have enjoyed being your BCHI Treasurer for 14 years and will continue until a replacement is found but at 80 years old, my mind is not as sharp as it once was. Therefore, I hope there is someone who has a desire to take on this job.

Here is a list of some of what it entails:

- ◆ Keep all accounts updated: check & money market accounts, CDs, calendar sales, chapter dues, chapter membership totals, legal & endowment funds, additional insurance
- ◆ Pay all bills by writing checks & send to BCHI Chair for signature
- ◆ Pay BCHA state dues annually by due date
- ◆ Prepare & submit lottery report annually & apply for new lottery license
- ◆ Renew registration in SAM (System for Award Management) annually
- ◆ Coordinate with USFS for reimbursement of sawyer trainer expenses
- ◆ Prepare treasurer's report for BCHI Board meetings & annual general meeting
- ◆ Prepare draft budget annually
- ◆ Maintain all records for annual financial review
- ◆ Change signatories at banking institution with change of officers
- ◆ Update bond information with change of officers

Please feel free to contact me with any questions. 208-398-8993 or [treasurer@bchi.org](mailto:treasurer@bchi.org)

## Idaho Non-Motorized Trails Initiative — by Dan Waugh, BCHI Vice Chairman, Idaho Horse Board, Idaho Horse Council Trails Chairman

We have been working hard at exploring other funding source options and we think we found a better way forward. I know I have spoken to many on this and our meeting will cover more in detail.

After some discussions with Parks and Rec, we believe rebranding the State Parks Pass to an Idaho Parks and Trails pass is a good idea. This would be 100% optional but we would want to spread the word that this would be both a pass for state parks as well as a funding source for trails. I think we can get people to buy this and support the passport who normally wouldn't.

We are requesting a fee increase for both a funding source for non-motorized trails as well as increased revenue to state parks to increase state park opportunities in the future. Using the current model we could generate between \$1.4M and over \$2M as well as increase funding for state parks based on sales. The current proposal is to charge \$25 for the annual parks pass; \$5 would be for trails with \$20 for parks.

We are getting a lot of support as we discuss this.



### How To Find Sawyer Certification Training

To find out when sawyer safety workshops are being held, contact one of the following Sawyer Trainers (in your region) or a Ranger District.

**Region 1 — Todd Brown** email [sawyer-coordinator1@bchi.org](mailto:sawyer-coordinator1@bchi.org) or call **208-451-3161**

**Region 4 — Rob Adams** email [sawyer-coordinator4@bchi.org](mailto:sawyer-coordinator4@bchi.org) or call **208-781-0548**

## Developing a Thinking Sawyer — by Rob Adams, Squaw Butte BCHI/Sawyer Coordinator Reg. 4

Tracy and Janelle are two of several women in the chapter and other trail volunteer groups, who have completed the new USFS "Developing Thinking Sawyer" course. This two-day workshop consists of a day of classroom modules and a second day in the field. Since 2019 in USFS Region 4 of Idaho several workshops have been held each spring and fall. Typically, we have ten to fifteen sawyers attending, some for the first time and others to recertify or refresh their knowledge.

"Developing Thinking Sawyers," is intended for employees and volunteers who apply for certification as a sawyer. The use of saws on National Forest System (NFS) lands is prohibited unless an individual is trained, evaluated by a qualified sawyer evaluator, and has received a national sawyer certification card.

This module-based training focuses on **developing a thinking sawyer** and emphasizes risk management, human factors, and sawyer safety. The evaluation process may be separate from this training to allow sawyers time to practice their skills under the supervision of an approved sawyer instructor. Completing the training program does not guarantee certification.

The USDA Forest Service "National Sawyer Training: Developing Thinking Sawyers" course outlines and describes the operational procedures for the use of saws by Forest Service employees, volunteers, and cooperators. These operational procedures are considered best practices that are designed to protect sawyers from accidental injury or death during saw operations. To engage in sawing activities, sawyers must acquire and maintain a USDA Forest Service national sawyer certification card and first aid/cardiopulmonary resuscitation (CPR) certification. This national sawyer certification card has a 3-year expiration date and can be subject to review at any time before it expires.

The field days are where the concepts and processes learned in the classroom are practiced and refined in a safe environment with mentor coaches to ensure the sawyer is operating in a safe environment and learning to make good decisions while developing different skills sets.

There will be several workshops in Idaho in 2024, contact Rob Adams (R4) [education@sbbchidaho.org](mailto:education@sbbchidaho.org) and Todd Brown (R1) for more information.



Tracy Zamzow cutting with a 24-inch bar Husqvarna on the Middle Fork of the Payette Boiling Springs Trail. Janelle Weeks standing by with the chapter Stihl MSA 220 battery-powered saw. — SBBCH

## Making New Friends on New Year's Day — by Sonya Allen, Treasure Valley BCHI

The TVBCH New Year's Day ride at Wilson Creek in the Owyhee Mountains was a great way to start out the new year! As a new member, I wasn't quite sure what to expect or how many people would be there. At around 40 degrees, it turned out to be a beautiful day! I was amazed at the turn-out – the whole parking lot was full with some overflow. There were a mix of horses of all different breeds and colors, mules and even a draft horse. The people accompanying their horses were just as varied from all different walks of life and ages – all very nice and friendly.



Everyone broke out in small groups to ride on the many different trails in the area. Some of the trails were rocky, while others were sandy and easy for barefoot horses to navigate. The mountains and rock formations in this area are beautiful! Several riders also got to see a large herd of deer traveling across the mountain-side.

Justin Stucker brought his wall tent

with a wood stove where tables were set up with food for a potluck after the ride. A fire was built outside under a tripod with a dutch oven full of chili. The food was plentiful and fabulous! It was a great opportunity to visit with people I knew and to meet new friends.

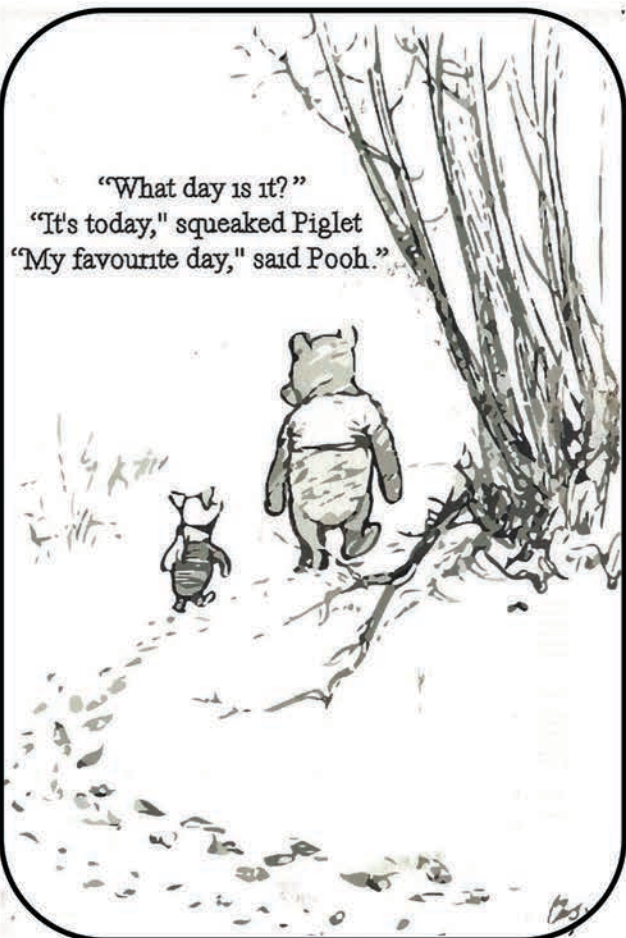
Overall, it was a wonderful day with a great bunch of people, can't wait to do it again next year!



## 2025 Calendar Submissions Due April 15th 2024

Back Country Horsemen of Idaho funds the state organization by collecting money raised by chapter dues and the sale of high quality raffle calendars. Calendar photos are submitted by BCH chapter members and a subset is selected for inclusion in the annual raffle calendar. Please participate and submit as many as you like. Please download and complete the Calendar Photo Submission Form which can be found on the BCHI website.

Don't forget to buy your calendar and enter to win.



## The Adventures of Otis and Sierra the Wonder Dog!! — by Abigail Burley, Salmon River BCHI

Something really incredible happened recently that is share-worthy. It is one of those stories that I like to tell, but I never want to have it happen again, as is often the case with adventures.

My 11 year old son and I went on a nice, easy trail ride near where we live and took along Sierra and Otis the dogs. Sierra is very meek and obedient and she typically stays very near me while I'm riding the horse. Otis is a now 21 month old Lab with boundless energy. He is the type I gladly take with me riding or hiking, in hopes that I can actually wear him out. There is also a satisfaction and joy for me watching the dogs run and play. They are so happy, and being with their person, even happier still. We recently "adopted" Otis from a friend who was moving away and sadly could not bring him. He is my son's dog now, and they absolutely love each other. They have the same exuberant energy and love for life. We are just figuring some of the things out with him, as he is still pretty new to us. Sierra we adopted as a pup about four years ago. She is super smart, but pretty timid and she and Otis seem to be kinda friends, or maybe more of a big sister, annoying little brother relationship; but they did not appear to be friends to the extent I witnessed that day.

We live in the mountains of eastern Idaho, which typically gets cold around the end of November and stays cold till April. This year was unseasonably warm into the late fall. We were riding by Hyde Pond in the late fall, and the pond was partially frozen, but the deep part still had a thin layer of ice. As we finished our ride and rode back to the trailer, we were riding down a steep hill toward the pond with the dogs running in front of us. As we passed by the pond, Otis the big yellow Lab went barreling across the pond after a deer on the other side, broke through the ice, and fell in. He struggled and struggled to get out, but kept breaking back through and falling in. I don't know how much time had passed with him in the ice water, but it seemed like an eternity. I could tell he was getting tired and discouraged. I was calling for him and starting to panic, thinking about how to get him out without falling through myself. There was no buoy or anything around for me to throw to him to hold onto. The pond itself is pretty deep and has a muddy, silty bottom. We've ice-fished there before in the deep of winter, but this was early December, not February. I made my son promise not to try to go into the water to save Otis. I had him hold the horses while I went as close as I safely could to get to the dog in the middle of the pond. I was calling and calling as hard as I could, praying one of those panicky, tearful prayers. Sierra saw my distress and raced across the ice to Otis and jumped into the hole in the water with him. She nudged and pushed his shoulder, trying to help him get out—that is how it appeared, at least. I don't know whether she was trying to help me or to help Otis, or both of us. I was so worried at this point, thinking that I would lose both my dogs. Then by God's mercy, Sierra was able to climb out! Seeing his little friend get out, Otis seemed to get a new energy and confidence, and gave a great effort to get out—and thank the Lord!! —gave one last heave and made it out of the ice water!



*Abigail and Isaiah Burley on the same trail during the summer.*

They miraculously seemed okay. They were cold. Poor Otis was biting his paws as he warmed up. I'm sure they hurt. They ran home along with us to the truck and got warm while we drove home. They seemed well, so we continued home and when we got home, they sat in front of the fireplace recovering for the rest of the evening. Goodness. Sometimes I really don't deserve grace—but we sure got it in droves that day. —And now Sierra has a new name: Sierra the Wonder Dog!!

**DEADLINE FOR SUBMISSIONS FOR  
BROOMTALES SPRING EDITION IS:**

**May 31, 2024**

Send submissions to:

BCHI Editor at [newsletter-editor1@bchi.org](mailto:newsletter-editor1@bchi.org)



*Otis is the big yellow Lab and Sierra is the littler fluffy white one*

## Hitching Post Project — by Steve Simmons, Eagle Rock BCHI



Steve, Tim, Kris, Christy,  
Joe & Aline

The Eagle Rock Chapter of the Back Country Horseman has taken a special interest in Harriman State Park in Island Park, Idaho. It is a beautiful place to ride but it has seen increasing use for the last several years.

One of the more popular areas in the park is Golden Lake in the north part of the park. It is a popular place to tie up for riders to take a lunch break. Up until recently the only place to tie a horse has been to one of the trees. This scrapes the bark off of the trees and endangers the tree.

In September 2023 several members of the ERBCH spent part of a day installing 4 hitching rails at Golden Lake. Joe Brinkmann spent several hours preparing the post, sawing out notches and bending metal to fit around the post.

The EBCH provided the rails, posts, and braces to hold the rails in place on top of the posts. The posts were buried 3 feet into the ground. We were assisted by Assistant Park Manager Joseph Blackburn who, 5 months after the fact, is still talking about how pleased he and the Park staff is with these hitching rails.

We all had a great time installing these hitching rails and had many laughs during the 3 hours or so we spent on this project.



Tim, Joe & Joe



Tim, Aline, Joe, Joe, Steve &  
Kris



Joe, Aline, State Park Rep  
Joe Blackburn, Tim & Steve



Steve & Joe



Kris, Steve, Joe, Christy & Aline

## Ranger Creek & Indian Tom Creek Trail Ride — by Steve Cooper, Twin Rivers BCHI

Six members of TRBCH rode down Ranger Creek (trail started in the shadow of Wenatchee Guard Station in the Blue Mountains). This ride was along a fairly nice trail in steep but beautiful canyon country. There were switchbacks to navigate along the open hillside and when we reached the crossing at Ranger Creek part of the horses drank a bit.

We traversed along the hillside well above Wenatchee Creek on a ribbon of a trail that led us above several rock ledges that always cause me discomfort as we pass through. Connie, who led us along the ride, would point out points of interest and I would reply - I'm not looking - because I wouldn't pull my eyes from the adequate trail tread, watching where every step would be (I wonder how my pack horse made his way without my helping him decide where to put his feet).



Whew, completed that section of trail, crossing a handful of muddy spots, not always in good spots, where horses needed to cross without stepping or slipping off of the trail.

We turned up Indian Tom Creek, missing the logical stopping point for lunch. We voted on a couple potential lunch stops before finding a decent spot we could tie the six horses and a mule while we ate, they welcomed the rest - all stood quietly.



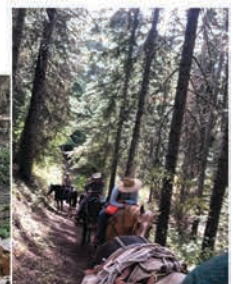
Like the descent down Ranger Creek the climb up Indian Tom Creek had some pretty steep climbs. Connie stopped often enough to rest our horses. The closer to the end of the trail we got the nicer the trail became. Horses watered at a water trough then made one last

long steep climb to the ridge top followed by a mostly level walk back to the trailers. Back by 3:30, a 5-1/2 hour ride.

Rod and I rode this loop a couple weeks before this chapter ride, cutting trees across Indian Tom Trail and one out of Ranger Creek (Forest Service Trail Crew had cleared this trail earlier in the summer) so on this warm sunny day we enjoyed a clear trail.

I enjoy riding in the mountains, sometimes I enjoy the challenge of a more difficult trail. I really like riding with friends. Ardel, Connie, Billie, Michelle, Rod and I have shared lots of trips and many, many trail miles together.

The next Chapter ride is October 7th, a comfortable ride from Kruze Meadows. Make your plans to ride that day!



## Good Fellowship at Wilson Creek — by Nancy Farnsworth, Treasure Valley BCHI



A slight breeze from the west, mixed with a hazy sky made for a perfect morning for a New Year's horseback ride at Wilson Creek Trails. Wilson Creek Trails are nestled in the Owyhee foothills between Murphy and Marsing, in southwest Idaho. The Treasure Valley Backcountry Horsemen were accompanied by many new and prospective members as well as members from other backcountry horsemen chapters. The parking lot was full of horses and horse trailers with no room to spare. All were saddled up

and ready to ride by noon. Clad in warm clothing and hats, each rider rode off in groups of two to ten horseback riders to enjoy the rugged terrain of the Idaho desert.



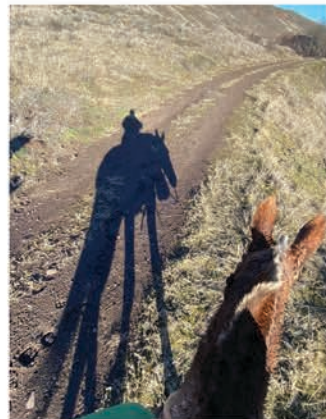
As the groups returned into camp, everyone could smell the three pots of chili cooking on the campfire. Justin Stucker set up his tent with a wood burning stove. Bill Murphy made his famously delicious chili. Rhonda Kelleher made her amazing chicken chili. Bill Bell made a delectable shredded chicken chili. After the riders tied the horses back at their trailers, we all gathered around the campfire with lawn chairs, sharing good food, good laughs, reconnecting with old friends and making new ones.



## Mid-Winter Trail Ride — by Pat Bogar, Twin Rivers BCHI

On Monday, January 29th, our weather here in the beautiful Lewis/Clark valley was predicted to be 61 degrees, so Rod Parks made a few phone calls and Ardel, Pamela and myself joined him on a ride which started about 13 miles up Asotin Creek. This trailhead has a non-motorized vehicle gate and is on WA Fish & Wildlife property. We rode up the Charlie Creek drainage and being down in the bottom of that canyon turned out to be mostly in the shade, with plenty of ice and snow on the old road trail and cool temps the whole 14+ miles of the ride. Coats and layers were necessary for sure and we all did well.

We did find a nice bench in the sun with good tie up spots for our critters (2 mules and 2 horses) to have a very warm and comfortable lunch. However, as soon as the sun went behind the hill, we mounted up and headed back to the trailhead.



Pat and Maddy



Ardel and Rod

The afternoon ride back down the canyon was definitely warmer than the morning ride up. This canyon has some real need for chainsaw work due to a fire a few years ago. We were able to ride around all but one spot of downed trees.

Dave, a Fish and Wildlife employee, stopped and visited while we were unsaddling and we let him know about the big downfalls. Perhaps they will beat us to them!

We were all happy to get a great mid-winter trail ride in with way better than normal weather.

Hope to see you on the trails.



Ardel and Pamela



Rod, Pamela & Ardel

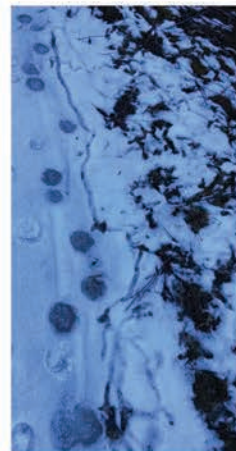


Rod and Pepper



Ardel

Rod



Rodent trail and cougar tracks

## Leon Berggren – BCHI Member, Emmett Chapter



Leon E. Berggren, 80, passed away on Christmas Day 2023 in Boise, Idaho. Dad is finally free! Leon was born on February 8, 1943, to Alta Marie and Carl S. Berggren of Imperial Nebraska, he was the second child of three children.

Leon moved around a lot with his family before graduating from Socorro High School. There, he met the love of his life Margaret Scott. They were married on February 2, 1964. Leon went on to New Mexico State University, where he earned his Bachelor of Science Degree in Wild Life Management.



In 1966, Leon and Margaret welcomed a son Scotty, and in 1970, they welcomed another son, Eric. Leon enjoyed spending time with his sons, hunting, fishing, camping, boating, running rivers, and bucking hay, just to name a few. He was an avid outdoors man.



Leon's job took him to many states, working in New Mexico, California, Utah, and retiring in Idaho in 1999. Leon loved retirement having cattle of his own in Sweet, Idaho. Leon enjoyed working his cattle with Margaret by his side. There, he had many happy memories with his children and grandchildren, whom he loved with his whole heart.

Leon will always be remembered as a BLM man, firefighter, husband, dad, grandpa, papa, and great grandpa. Leon will be dearly missed by his family and many friends.

He is survived by his wife Margaret, son Scott and wife Stacy, son Eric and wife Ralynn. Five grandchildren, Carl Russell, Brian (Aspy) Berggren, Tiffanie Perkins, Cassie (Brady) Moore and Taylor Berggren. Four great grandchildren, Jackson, Gentry, Leah, and Carl Judson. Other surviving relatives include sister Anita Little and husband Jack, nieces Arlene and Janice along with their families, cousin Walt, and many more cousins. Preceded in death by his parents Carl S. and Alta Berggren, brother Carl Thomas, grandparents, aunts, uncles, cousins and friends.



Per Leon's wishes, cremation has taken place by Bowman Funeral Parlor, Garden city. A memorial service/celebration of life will take place at a later date this spring in Sweet, Idaho, with an interment at the Sweet Idaho Cemetery.

Margaret Berggren, PO 126, Sweet, ID 83670

## Norman Everett McGuire — BCHI Member, High Desert BCH/Cache Peak BCHI

On January 10, 2024, Norman Everett McGuire, retired farmer, cowboy for life, father, grandfather, brother, "Buddy" and friend, passed away after a short illness at St. Luke's Magic Valley Medical Center in Twin Falls.

Norman was born on July 8, 1936, in Twin Falls, Idaho. He attended Twin Falls High School, where he met and fell in love with his wife, Marie. They had four children together, two sons and two daughters.

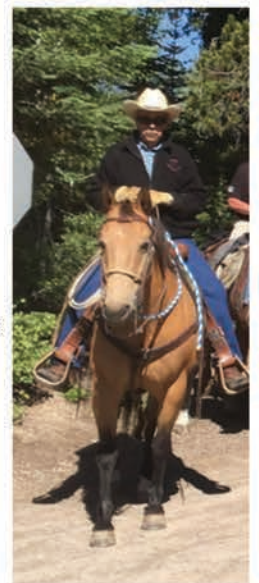
Norman and Marie moved to the farm in Hansen in 1960. This is where they raised their family and farmed for the next 45 years. Norman and Marie retired in 2000. They had been married for fifty years when Marie passed away on October 29, 2005. Norman stayed on the farm until 2013 when he moved to Jerome. He



found the perfect little place, outside of town, where he could have his horses and be closer to his "Buddy" Kathy. He loved his little place and it showed. It was perfect for him to continue living the life that made him happy until the day he passed.

Surviving are his son - Rick (Penny) McGuire of Jerome, daughters – Teresa (Gary) Stoker of Boise and Pam (Ben) Pena of Lincoln City, Oregon – sister Carole Skinner of Salem, Oregon along with 10 grandchildren, 3 great-grandchildren, and last, but definitely not least, his "Buddy"- Kathy Kerley of Jerome, and very special friend – Renae Morgan of Washington. He was preceded in death by

his son Jeff McGuire, granddaughter Mandy Kay, infant grandson, parents D.A. & Winnie McGuire, and sister Patty McGuire. All those who knew and loved him know that no one was a stranger to him. He had such a way of lighting up the room with his wit and personality. Though our hearts ache with his departure, he gifted us with incredible memories to cherish until we reunite.



The family requests those who wish to contribute to Norman's name may do so to Rising Star's Therapeutic Riding Center, P.O Box 482, Twin Falls, ID 83303.

## Please Welcome Our New BCHI State Secretary



I was born to a ranching family that bred foundation quarter horses and raised Hereford and Limousin cattle. My husband was medically retired from the military in 2014 after 8 deployments and 19 years of service in the Navy, Marine Corp and Army. We moved to North Idaho shortly after where we still raise a few foundation quarter horses. Our daughter and two grandsons joined us in 2021 and now live just a few miles away. I work part time as the bookkeeper for our local volunteer fire district and the finance manager for a neighboring city as well as being a caregiver to my husband. We are both leaders for our local 4H and serve at the local rodeo association. We have been members of the Priest River Valley Backcountry Horsemen since 2016, helping with officer positions as well as starting the annual fundraiser, a horseback scavenger hunt that we hold each September at Priest Lake.

I am honored to be a part of the state chapter, taking on the role of secretary. I look forward to serving our local chapters and supporting our state chapter to the best of my ability.

Please feel free to reach out to me by email or phone.

Robin Pilkington  
(208) 217-1901  
BCHI State Secretary

*Food for thought:*

## What if you had shown up?

Nothing makes  
you feel more  
successful than  
pulling the right  
string on the feed  
bag on the first try.

**DEADLINE FOR SUBMISSIONS FOR  
BROOMTALES SPRING EDITION IS:**

**May 31, 2024**

Send submissions to:

BCHI Editor at [newsletter-editor1@bchi.org](mailto:newsletter-editor1@bchi.org)

## 2023 Calendar Raffle Winners

**\$3,000 Grand Prize Winner:**

**Dick & Nancy Kleint, Boise, ID**

**The \$500 Gift Card Winners:**

Steve Palley, Boise, ID  
Gen Boguslawski, Meridian, ID  
Sarah Forrey, Meridian, ID  
Russell L Cooper, Kooskia, ID  
Fred Staab, Lewiston, ID  
Pat & Jill Graham, Post Falls, ID  
Terry Hendricks, Oakdale, CA  
Tammy Jones, Herald, CA  
Albert Becker, New Meadows, ID  
Donna London, Woodland, PA  
Julie A Washburn, Kootenai, ID



BCH of Idaho, Inc.  
Robin Pilkington, Secretary  
P.O. Box 264  
Priest River, ID 83856  
[bchi.secretary@gmail.com](mailto:bchi.secretary@gmail.com)

Non-Profit  
Organization  
U.S. Postage  
PAID  
Permit No. 104  
Boise, Idaho



## BCHA 2024 NATIONAL BOARD MEETING

March 24-27, 2024

Ramkota Hotel & Conference Center

800 North Poplar, Casper, Wyoming 82601

Room Block dates available are March 23-27, 2024

Email [michellewade@bcha.org](mailto:michellewade@bcha.org) with questions



**ADVERTISE IN BROOMTALES** *Pat Bogar (509) 780-3545 [newsletter-editor@bchi.org](mailto:newsletter-editor@bchi.org)*

Generally the following applies:

**FREE Member Classified Ads - Equine/Back Country-related only - No Business/Service Ads**

**FREE Chapter Event Announcements**

**Business Card-Size Advertisements—Member \$35 Non-member \$50 - Larger ads can be accommodated**

BCHI and the Broomtales editor are not responsible for the content of any ad or the condition or temperament of any merchandise.